



中国认可
国际互认
检测
TESTING
CNAS L16762

TEST REPORT

Applicant: Shenzhen Techtion Smart Electronics Co., Ltd
Address: Room 902, 8th Floor, Unit 1, Building No. 2, Xintianxia Chengyun
Factory District, Vanke City Community, Bantian Street, Longgang
District, Shenzhen

The following sample(s) and information was/were provided by the client. Dinghua does not assume any responsibility for verifying the accuracy, appropriateness, and/or completeness of the information provided.

Manufacturer: Shenzhen Techtion Smart Electronics Co., Ltd
Address: Room 902, 8th Floor, Unit 1, Building No. 2, Xintianxia Chengyun
Factory District, Vanke City Community, Bantian Street, Longgang
District, Shenzhen
Production plant: Shenzhen Techtion Smart Electronics Co., Ltd
Address: Room 902, 8th Floor, Unit 1, Building No. 2, Xintianxia Chengyun
Factory District, Vanke City Community, Bantian Street, Longgang
District, Shenzhen
Client Contact Number: /
Sample name: All in one Panel PC
Sample Condition: Intact
Trademark: /
Model /Type: TS-150ACBJ
Sample Receiving Date: Aug. 09, 2024&Aug. 26, 2024
Testing Period: Aug. 09, 2024 ~ Aug. 15, 2024
Test Method(s): Please refer to next page(s).
Test Result(s): Please refer to next page(s).

Test Requirement	Conclusion
EU RoHS Directive(EU) 2015/863 amending Annex II to Directive 2011/65/EU - Lead, Mercury, Cadmium, Hexavalent chromium, Polybrominated biphenyls (PBB), Polybrominated diphenyl ethers (PBDE), Bis (2-ethylhexyl) phthalate (DEHP), Butyl benzyl phthalate (BBP), Dibutyl phthalate (DBP) and Diisobutyl phthalate (DIBP)	Pass
Note: The judgment rule complies with the simple binary judgment rule	

***** FOR FURTHER DETAILS, PLEASE REFER TO THE FOLLOWING PAGE (S) *****

Ding Hua International Certification(Shenzhen) Co., Ltd.

Signature of Authorized Representative



WJ

Authorized signatory

1. Tested components

No.	Sample Description	REMARK
1	PCB	SEE THE PHOTO
2	Golden metal socket	SEE THE PHOTO
3	White dry glue	SEE THE PHOTO
4	Off white plastic base	SEE THE PHOTO
5	Silver metal pin	SEE THE PHOTO
6	Chip inductor	SEE THE PHOTO
7	Triode	SEE THE PHOTO
8	White silicone	SEE THE PHOTO
9	Silver metal cover	SEE THE PHOTO
10	Chip	SEE THE PHOTO
11	PCB	SEE THE PHOTO
12	Chip	SEE THE PHOTO
13	Red plastic socket	SEE THE PHOTO
14	White plastic base	SEE THE PHOTO
15	Black plastic cover	SEE THE PHOTO
16	Golden metal pin	SEE THE PHOTO
17	Black plastic base	SEE THE PHOTO
18	Tea colored transparent plastic sheet	SEE THE PHOTO
19	Silver metal stud	SEE THE PHOTO
20	White transparent tape	SEE THE PHOTO
21	Crystal oscillator	SEE THE PHOTO
22	White plastic button	SEE THE PHOTO
23	Silver metal sheet	SEE THE PHOTO
24	Black plastic base	SEE THE PHOTO
25	Chip	SEE THE PHOTO
26	Silver metal shell	SEE THE PHOTO
27	Black plastic base	SEE THE PHOTO
28	Green LED	SEE THE PHOTO
29	Silver metal shell	SEE THE PHOTO

30	Black plastic base	SEE THE PHOTO
31	Silver plastic shell	SEE THE PHOTO
32	Internal rubber plug of capacitor	SEE THE PHOTO
33	Black plastic base	SEE THE PHOTO
34	Golden metal pin	SEE THE PHOTO
35	Silver metal shell	SEE THE PHOTO
36	Black plastic base	SEE THE PHOTO
37	Silver metal plug	SEE THE PHOTO
38	Silver metal shell	SEE THE PHOTO
39	Blue plastic base	SEE THE PHOTO
40	Silver metal shell	SEE THE PHOTO
41	White plastic base	SEE THE PHOTO
42	Black plastic base	SEE THE PHOTO
43	Golden metal terminal	SEE THE PHOTO
44	Black coating	SEE THE PHOTO
45	Metal substrate	SEE THE PHOTO
46	White label sticker	SEE THE PHOTO
47	Black foam pad	SEE THE PHOTO
48	Yellow plastic sheath	SEE THE PHOTO
49	Yellow plastic sheath	SEE THE PHOTO
50	Silver metal shell	SEE THE PHOTO
51	Silver metal conductive sheet	SEE THE PHOTO
52	Black heat shrink sleeve	SEE THE PHOTO
53	Red heat shrink sleeve	SEE THE PHOTO
54	Black plastic wire leather	SEE THE PHOTO
55	Red plastic wire cover	SEE THE PHOTO
56	White plastic plug	SEE THE PHOTO
57	Metal stud substrate with black coating	SEE THE PHOTO
58	Black adhesive tape	SEE THE PHOTO
59	Black coating	SEE THE PHOTO
60	Metal cover substrate	SEE THE PHOTO

61	Metal mother column substrate with black coating	SEE THE PHOTO
62	Metal nut substrate with black coating	SEE THE PHOTO
63	Red plastic wire cover	SEE THE PHOTO
64	Red plastic wire belt with black coating	SEE THE PHOTO
65	White plastic shell	SEE THE PHOTO
66	Black foam with adhesive tape	SEE THE PHOTO
67	Silver metal shell	SEE THE PHOTO
68	White dry glue	SEE THE PHOTO
69	Silver metal solder	SEE THE PHOTO
70	Green PCB	SEE THE PHOTO
71	Silver magnet	SEE THE PHOTO
72	Black plastic film	SEE THE PHOTO
73	Black plastic ring	SEE THE PHOTO
74	Red plastic wire skin	SEE THE PHOTO
75	White plastic wire skin	SEE THE PHOTO
76	Black plastic wire skin	SEE THE PHOTO
77	Plastic base	SEE THE PHOTO
78	Black plastic shell	SEE THE PHOTO
79	Silver metal solder	SEE THE PHOTO
80	Silver metal shell	SEE THE PHOTO
81	Golden metal pin	SEE THE PHOTO
82	Blue plastic	SEE THE PHOTO
83	Silver metal nut	SEE THE PHOTO
84	Silver metal screw	SEE THE PHOTO
85	Red plastic wire skin	SEE THE PHOTO
86	Green plastic wire skin	SEE THE PHOTO
87	White plastic wire skin	SEE THE PHOTO
88	Black plastic wire skin	SEE THE PHOTO
89	Black plastic sheath	SEE THE PHOTO
90	Black plastic heat shrink sleeve	SEE THE PHOTO
91	Cable plastic shell	SEE THE PHOTO

92	White plastic wire skin	SEE THE PHOTO
93	Yellow plastic wire skin	SEE THE PHOTO
94	Red plastic wire skin	SEE THE PHOTO
95	Black plastic wire skin	SEE THE PHOTO
96	Black plastic shell	SEE THE PHOTO
97	Red plastic wire skin	SEE THE PHOTO
98	Black plastic wire skin	SEE THE PHOTO
99	Yellow plastic wire skin	SEE THE PHOTO
100	Beige plastic shell	SEE THE PHOTO
101	Black plastic sheath	SEE THE PHOTO
102	Silver metal solder	SEE THE PHOTO
103	Golden metal shell	SEE THE PHOTO
104	Golden metal gasket	SEE THE PHOTO
105	Golden metal washer	SEE THE PHOTO
106	Black plastic wire skin	SEE THE PHOTO
107	Golden metal pin	SEE THE PHOTO
108	White plastic	SEE THE PHOTO
109	Transparent plastic sheath	SEE THE PHOTO
110	Silver metal solder	SEE THE PHOTO
111	Silver metal nut	SEE THE PHOTO
112	Silver metal shell	SEE THE PHOTO
113	Golden metal terminal	SEE THE PHOTO
114	White plastic	SEE THE PHOTO
115	Red plastic circle	SEE THE PHOTO
116	Black plastic shell	SEE THE PHOTO
117	Golden metal shell	SEE THE PHOTO
118	Light pink transparent plastic sheath	SEE THE PHOTO
119	Black plastic shell	SEE THE PHOTO
120	Silver metal screw	SEE THE PHOTO
121	Metal screw substrate with black coating	SEE THE PHOTO
122	White plastic zip tie	SEE THE PHOTO

2. Tested results

Part No	Test Item	Results of EDXRF	Screening Result of PHTH	Result of Wet Chemical Testing (mg/kg)	Conclusion
1	Cd	BL	---	---	PASS
	Pb	BL	---	---	
	Hg	BL	---	---	
	Cr(VI)	BL	---	---	
	PBBs	BL	---	---	
	PBDEs	BL	---	---	
	DBP	---	BL	---	
	BBP	---	BL	---	
	DEHP	---	BL	---	
	DIBP	---	BL	---	
2	Cd	BL	---	---	PASS
	Pb	BL	---	---	
	Hg	BL	---	---	
	Cr(VI)	BL	---	---	
	PBBs	---	---	---	
	PBDEs	---	---	---	
	DBP	---	---	---	
	BBP	---	---	---	
	DEHP	---	---	---	
	DIBP	---	---	---	
3	Cd	BL	---	---	PASS
	Pb	BL	---	---	
	Hg	BL	---	---	
	Cr(VI)	BL	---	---	
	PBBs	BL	---	---	
	PBDEs	BL	---	---	
	DBP	---	BL	---	
	BBP	---	BL	---	
	DEHP	---	BL	---	
	DIBP	---	BL	---	

Part No	Test Item	Results of EDXRF	Screening Result of PHTH	Result of Wet Chemical Testing (mg/kg)	Conclusion
4	Cd	BL	---	---	PASS
	Pb	BL	---	---	
	Hg	BL	---	---	
	Cr(VI)	BL	---	---	
	PBBs	IN	---	ND	
	PBDEs	IN	---	ND	
	DBP	---	BL	---	
	BBP	---	BL	---	
	DEHP	---	BL	---	
	DIBP	---	BL	---	
5	Cd	BL	---	---	PASS
	Pb	BL	---	---	
	Hg	BL	---	---	
	Cr(VI)	BL	---	---	
	PBBs	---	---	---	
	PBDEs	---	---	---	
	DBP	---	---	---	
	BBP	---	---	---	
	DEHP	---	---	---	
	DIBP	---	---	---	
6	Cd	BL	---	---	PASS
	Pb	BL	---	---	
	Hg	BL	---	---	
	Cr(VI)	BL	---	---	
	PBBs	BL	---	---	
	PBDEs	BL	---	---	
	DBP	---	BL	---	
	BBP	---	BL	---	
	DEHP	---	BL	---	
	DIBP	---	BL	---	

Part No	Test Item	Results of EDXRF	Screening Result of PHTH	Result of Wet Chemical Testing (mg/kg)	Conclusion
7	Cd	BL	---	---	PASS
	Pb	BL	---	---	
	Hg	BL	---	---	
	Cr(VI)	BL	---	---	
	PBBs	BL	---	---	
	PBDEs	BL	---	---	
	DBP	---	BL	---	
	BBP	---	BL	---	
	DEHP	---	BL	---	
	DIBP	---	BL	---	
8	Cd	BL	---	---	PASS
	Pb	BL	---	---	
	Hg	BL	---	---	
	Cr(VI)	BL	---	---	
	PBBs	BL	---	---	
	PBDEs	BL	---	---	
	DBP	---	BL	---	
	BBP	---	BL	---	
	DEHP	---	BL	---	
	DIBP	---	BL	---	
9	Cd	BL	---	---	PASS
	Pb	BL	---	---	
	Hg	BL	---	---	
	Cr(VI)	BL	---	---	
	PBBs	---	---	---	
	PBDEs	---	---	---	
	DBP	---	---	---	
	BBP	---	---	---	
	DEHP	---	---	---	
	DIBP	---	---	---	

Part No	Test Item	Results of EDXRF	Screening Result of PHTH	Result of Wet Chemical Testing (mg/kg)	Conclusion
10	Cd	BL	---	---	PASS
	Pb	BL	---	---	
	Hg	BL	---	---	
	Cr(VI)	BL	---	---	
	PBBs	BL	---	---	
	PBDEs	BL	---	---	
	DBP	---	BL	---	
	BBP	---	BL	---	
	DEHP	---	BL	---	
	DIBP	---	BL	---	
11	Cd	BL	---	---	PASS
	Pb	BL	---	---	
	Hg	BL	---	---	
	Cr(VI)	BL	---	---	
	PBBs	BL	---	---	
	PBDEs	BL	---	---	
	DBP	---	BL	---	
	BBP	---	BL	---	
	DEHP	---	BL	---	
	DIBP	---	BL	---	
12	Cd	BL	---	---	PASS
	Pb	BL	---	---	
	Hg	BL	---	---	
	Cr(VI)	BL	---	---	
	PBBs	BL	---	---	
	PBDEs	BL	---	---	
	DBP	---	BL	---	
	BBP	---	BL	---	
	DEHP	---	BL	---	
	DIBP	---	BL	---	

Part No	Test Item	Results of EDXRF	Screening Result of PHTH	Result of Wet Chemical Testing (mg/kg)	Conclusion
13	Cd	BL	---	---	PASS
	Pb	BL	---	---	
	Hg	BL	---	---	
	Cr(VI)	BL	---	---	
	PBBs	IN	---	ND	
	PBDEs	IN	---	ND	
	DBP	---	BL	---	
	BBP	---	BL	---	
	DEHP	---	BL	---	
	DIBP	---	BL	---	
14	Cd	BL	---	---	PASS
	Pb	BL	---	---	
	Hg	BL	---	---	
	Cr(VI)	BL	---	---	
	PBBs	BL	---	---	
	PBDEs	BL	---	---	
	DBP	---	BL	---	
	BBP	---	BL	---	
	DEHP	---	BL	---	
	DIBP	---	BL	---	
15	Cd	BL	---	---	PASS
	Pb	BL	---	---	
	Hg	BL	---	---	
	Cr(VI)	BL	---	---	
	PBBs	BL	---	---	
	PBDEs	BL	---	---	
	DBP	---	BL	---	
	BBP	---	BL	---	
	DEHP	---	BL	---	
	DIBP	---	BL	---	

Part No	Test Item	Results of EDXRF	Screening Result of PHTH	Result of Wet Chemical Testing (mg/kg)	Conclusion
16	Cd	BL	---	---	PASS
	Pb	BL	---	---	
	Hg	BL	---	---	
	Cr(VI)	BL	---	---	
	PBBs	---	---	---	
	PBDEs	---	---	---	
	DBP	---	---	---	
	BBP	---	---	---	
	DEHP	---	---	---	
	DIBP	---	---	---	
17	Cd	BL	---	---	PASS
	Pb	BL	---	---	
	Hg	BL	---	---	
	Cr(VI)	BL	---	---	
	PBBs	IN	---	ND	
	PBDEs	IN	---	ND	
	DBP	---	BL	---	
	BBP	---	BL	---	
	DEHP	---	BL	---	
	DIBP	---	BL	---	
18	Cd	BL	---	---	PASS
	Pb	BL	---	---	
	Hg	BL	---	---	
	Cr(VI)	BL	---	---	
	PBBs	BL	---	---	
	PBDEs	BL	---	---	
	DBP	---	BL	---	
	BBP	---	BL	---	
	DEHP	---	BL	---	
	DIBP	---	BL	---	

Part No	Test Item	Results of EDXRF	Screening Result of PHTH	Result of Wet Chemical Testing (mg/kg)	Conclusion
19	Cd	BL	---	---	PASS
	Pb	BL	---	---	
	Hg	BL	---	---	
	Cr(VI)	BL	---	---	
	PBBs	---	---	---	
	PBDEs	---	---	---	
	DBP	---	---	---	
	BBP	---	---	---	
	DEHP	---	---	---	
	DIBP	---	---	---	
20	Cd	BL	---	---	PASS
	Pb	BL	---	---	
	Hg	BL	---	---	
	Cr(VI)	BL	---	---	
	PBBs	BL	---	---	
	PBDEs	BL	---	---	
	DBP	---	BL	---	
	BBP	---	BL	---	
	DEHP	---	IN	119	
	DIBP	---	BL	---	
21	Cd	BL	---	---	PASS
	Pb	BL	---	---	
	Hg	BL	---	---	
	Cr(VI)	BL	---	---	
	PBBs	BL	---	---	
	PBDEs	BL	---	---	
	DBP	---	BL	---	
	BBP	---	BL	---	
	DEHP	---	BL	---	
	DIBP	---	BL	---	

Part No	Test Item	Results of EDXRF	Screening Result of PHTH	Result of Wet Chemical Testing (mg/kg)	Conclusion
22	Cd	BL	---	---	PASS
	Pb	BL	---	---	
	Hg	BL	---	---	
	Cr(VI)	BL	---	---	
	PBBs	BL	---	---	
	PBDEs	BL	---	---	
	DBP	---	BL	---	
	BBP	---	BL	---	
	DEHP	---	BL	---	
	DIBP	---	BL	---	
23	Cd	BL	---	---	PASS
	Pb	BL	---	---	
	Hg	BL	---	---	
	Cr(VI)	BL	---	---	
	PBBs	---	---	---	
	PBDEs	---	---	---	
	DBP	---	---	---	
	BBP	---	---	---	
	DEHP	---	---	---	
	DIBP	---	---	---	
24	Cd	BL	---	---	PASS
	Pb	BL	---	---	
	Hg	BL	---	---	
	Cr(VI)	BL	---	---	
	PBBs	BL	---	---	
	PBDEs	BL	---	---	
	DBP	---	BL	---	
	BBP	---	BL	---	
	DEHP	---	BL	---	
	DIBP	---	BL	---	

Part No	Test Item	Results of EDXRF	Screening Result of PHTH	Result of Wet Chemical Testing (mg/kg)	Conclusion
25	Cd	BL	---	---	PASS
	Pb	BL	---	---	
	Hg	BL	---	---	
	Cr(VI)	BL	---	---	
	PBBs	BL	---	--	
	PBDEs	BL	---	--	
	DBP	---	BL	---	
	BBP	---	BL	---	
	DEHP	---	BL	---	
	DIBP	---	BL	---	
26	Cd	BL	---	---	PASS
	Pb	BL	---	---	
	Hg	BL	---	---	
	Cr(VI)	BL	---	---	
	PBBs	---	---	---	
	PBDEs	---	---	---	
	DBP	---	---	---	
	BBP	---	---	---	
	DEHP	---	---	---	
	DIBP	---	---	---	
27	Cd	BL	---	---	PASS
	Pb	BL	---	---	
	Hg	BL	---	---	
	Cr(VI)	BL	---	---	
	PBBs	BL	---	---	
	PBDEs	BL	---	---	
	DBP	---	BL	---	
	BBP	---	BL	---	
	DEHP	---	BL	---	
	DIBP	---	BL	---	

Part No	Test Item	Results of EDXRF	Screening Result of PHTH	Result of Wet Chemical Testing (mg/kg)	Conclusion
28	Cd	BL	---	---	PASS
	Pb	BL	---	---	
	Hg	BL	---	---	
	Cr(VI)	BL	---	---	
	PBBs	BL	---	---	
	PBDEs	BL	---	---	
	DBP	---	BL	---	
	BBP	---	BL	---	
	DEHP	---	BL	---	
	DIBP	---	BL	---	
29	Cd	BL	---	---	PASS
	Pb	BL	---	---	
	Hg	BL	---	---	
	Cr(VI)	BL	---	---	
	PBBs	---	---	---	
	PBDEs	---	---	---	
	DBP	---	---	---	
	BBP	---	---	---	
	DEHP	---	---	---	
	DIBP	---	---	---	
30	Cd	BL	---	---	PASS
	Pb	BL	---	---	
	Hg	BL	---	---	
	Cr(VI)	BL	---	---	
	PBBs	BL	---	---	
	PBDEs	BL	---	---	
	DBP	---	BL	---	
	BBP	---	BL	---	
	DEHP	---	BL	---	
	DIBP	---	BL	---	

Part No	Test Item	Results of EDXRF	Screening Result of PHTH	Result of Wet Chemical Testing (mg/kg)	Conclusion
31	Cd	BL	---	---	PASS
	Pb	BL	---	---	
	Hg	BL	---	---	
	Cr(VI)	BL	---	---	
	PBBs	BL	---	---	
	PBDEs	BL	---	---	
	DBP	---	BL	---	
	BBP	---	BL	---	
	DEHP	---	BL	---	
	DIBP	---	BL	---	
32	Cd	BL	---	---	PASS
	Pb	BL	---	---	
	Hg	BL	---	---	
	Cr(VI)	BL	---	---	
	PBBs	BL	---	---	
	PBDEs	BL	---	---	
	DBP	---	BL	---	
	BBP	---	BL	---	
	DEHP	---	BL	---	
	DIBP	---	BL	---	
33	Cd	BL	---	---	PASS
	Pb	BL	---	---	
	Hg	BL	---	---	
	Cr(VI)	BL	---	---	
	PBBs	BL	---	---	
	PBDEs	BL	---	---	
	DBP	---	BL	---	
	BBP	---	BL	---	
	DEHP	---	BL	---	
	DIBP	---	BL	---	

Part No	Test Item	Results of EDXRF	Screening Result of PHTH	Result of Wet Chemical Testing (mg/kg)	Conclusion
34	Cd	BL	---	---	PASS
	Pb	BL	---	---	
	Hg	BL	---	---	
	Cr(VI)	BL	---	---	
	PBBs	---	---	---	
	PBDEs	---	---	---	
	DBP	---	---	---	
	BBP	---	---	---	
	DEHP	---	---	---	
	DIBP	---	---	---	
35	Cd	BL	---	---	PASS
	Pb	BL	---	---	
	Hg	BL	---	---	
	Cr(VI)	IN	---	Negative	
	PBBs	---	---	---	
	PBDEs	---	---	---	
	DBP	---	---	---	
	BBP	---	---	---	
	DEHP	---	---	---	
	DIBP	---	---	---	
36	Cd	BL	---	---	PASS
	Pb	BL	---	---	
	Hg	BL	---	---	
	Cr(VI)	BL	---	---	
	PBBs	BL	---	---	
	PBDEs	BL	---	---	
	DBP	---	BL	---	
	BBP	---	BL	---	
	DEHP	---	BL	---	
	DIBP	---	BL	---	

Part No	Test Item	Results of EDXRF	Screening Result of PHTH	Result of Wet Chemical Testing (mg/kg)	Conclusion
37	Cd	BL	---	---	PASS
	Pb	BL	---	---	
	Hg	BL	---	---	
	Cr(VI)	BL	---	---	
	PBBs	---	---	---	
	PBDEs	---	---	---	
	DBP	---	---	---	
	BBP	---	---	---	
	DEHP	---	---	---	
	DIBP	---	---	---	
38	Cd	BL	---	---	PASS
	Pb	BL	---	---	
	Hg	BL	---	---	
	Cr(VI)	BL	---	---	
	PBBs	---	---	---	
	PBDEs	---	---	---	
	DBP	---	---	---	
	BBP	---	---	---	
	DEHP	---	---	---	
	DIBP	---	---	---	
39	Cd	BL	---	---	PASS
	Pb	BL	---	---	
	Hg	BL	---	---	
	Cr(VI)	BL	---	---	
	PBBs	BL	---	---	
	PBDEs	BL	---	---	
	DBP	---	BL	---	
	BBP	---	BL	---	
	DEHP	---	BL	---	
	DIBP	---	BL	---	

Part No	Test Item	Results of EDXRF	Screening Result of PHTH	Result of Wet Chemical Testing (mg/kg)	Conclusion
40	Cd	BL	---	---	PASS
	Pb	BL	---	---	
	Hg	BL	---	---	
	Cr(VI)	BL	---	---	
	PBBs	---	---	---	
	PBDEs	---	---	---	
	DBP	---	---	---	
	BBP	---	---	---	
	DEHP	---	---	---	
	DIBP	---	---	---	
41	Cd	BL	---	---	PASS
	Pb	BL	---	---	
	Hg	BL	---	---	
	Cr(VI)	BL	---	---	
	PBBs	IN	---	ND	
	PBDEs	IN	---	ND	
	DBP	---	BL	---	
	BBP	---	BL	---	
	DEHP	---	BL	---	
	DIBP	---	BL	---	
42	Cd	BL	---	---	PASS
	Pb	BL	---	---	
	Hg	BL	---	---	
	Cr(VI)	BL	---	---	
	PBBs	BL	---	---	
	PBDEs	BL	---	---	
	DBP	---	BL	---	
	BBP	---	BL	---	
	DEHP	---	BL	---	
	DIBP	---	BL	---	

Part No	Test Item	Results of EDXRF	Screening Result of PHTH	Result of Wet Chemical Testing (mg/kg)	Conclusion
43	Cd	BL	---	---	PASS
	Pb	BL	---	---	
	Hg	BL	---	---	
	Cr(VI)	BL	---	---	
	PBBs	---	---	---	
	PBDEs	---	---	---	
	DBP	---	---	---	
	BBP	---	---	---	
	DEHP	---	---	---	
	DIBP	---	---	---	
44	Cd	BL	---	---	PASS
	Pb	BL	---	---	
	Hg	BL	---	---	
	Cr(VI)	BL	---	---	
	PBBs	BL	---	---	
	PBDEs	BL	---	---	
	DBP	---	BL	---	
	BBP	---	BL	---	
	DEHP	---	BL	---	
	DIBP	---	BL	---	
45	Cd	BL	---	---	PASS
	Pb	BL	---	---	
	Hg	BL	---	---	
	Cr(VI)	BL	---	---	
	PBBs	---	---	---	
	PBDEs	---	---	---	
	DBP	---	---	---	
	BBP	---	---	---	
	DEHP	---	---	---	
	DIBP	---	---	---	

Part No	Test Item	Results of EDXRF	Screening Result of PHTH	Result of Wet Chemical Testing (mg/kg)	Conclusion
46	Cd	BL	---	---	PASS
	Pb	BL	---	---	
	Hg	BL	---	---	
	Cr(VI)	BL	---	---	
	PBBs	BL	---	---	
	PBDEs	BL	---	---	
	DBP	---	BL	---	
	BBP	---	BL	---	
	DEHP	---	BL	---	
	DIBP	---	BL	---	
47	Cd	BL	---	---	PASS
	Pb	BL	---	---	
	Hg	BL	---	---	
	Cr(VI)	BL	---	---	
	PBBs	BL	---	---	
	PBDEs	BL	---	---	
	DBP	---	BL	---	
	BBP	---	BL	---	
	DEHP	---	BL	---	
	DIBP	---	BL	---	
48	Cd	BL	---	---	PASS
	Pb	BL	---	---	
	Hg	BL	---	---	
	Cr(VI)	BL	---	---	
	PBBs	BL	---	---	
	PBDEs	BL	---	---	
	DBP	---	BL	---	
	BBP	---	BL	---	
	DEHP	---	BL	---	
	DIBP	---	BL	---	

Part No	Test Item	Results of EDXRF	Screening Result of PHTH	Result of Wet Chemical Testing (mg/kg)	Conclusion
49	Cd	BL	---	---	PASS
	Pb	BL	---	---	
	Hg	BL	---	---	
	Cr(VI)	BL	---	---	
	PBBs	BL	---	---	
	PBDEs	BL	---	---	
	DBP	---	BL	---	
	BBP	---	BL	---	
	DEHP	---	BL	---	
	DIBP	---	BL	---	
50	Cd	BL	---	---	PASS
	Pb	BL	---	---	
	Hg	BL	---	---	
	Cr(VI)	IN	---	Negative	
	PBBs	---	---	---	
	PBDEs	---	---	---	
	DBP	---	---	---	
	BBP	---	---	---	
	DEHP	---	---	---	
	DIBP	---	---	---	
51	Cd	BL	---	---	PASS
	Pb	BL	---	---	
	Hg	BL	---	---	
	Cr(VI)	IN	---	Negative	
	PBBs	---	---	---	
	PBDEs	---	---	---	
	DBP	---	---	---	
	BBP	---	---	---	
	DEHP	---	---	---	
	DIBP	---	---	---	

Part No	Test Item	Results of EDXRF	Screening Result of PHTH	Result of Wet Chemical Testing (mg/kg)	Conclusion
52	Cd	BL	---	---	PASS
	Pb	BL	---	---	
	Hg	BL	---	---	
	Cr(VI)	BL	---	---	
	PBBs	BL	---	---	
	PBDEs	BL	---	---	
	DBP	---	BL	---	
	BBP	---	BL	---	
	DEHP	---	BL	---	
	DIBP	---	BL	---	
53	Cd	BL	---	---	PASS
	Pb	BL	---	---	
	Hg	BL	---	---	
	Cr(VI)	BL	---	---	
	PBBs	BL	---	---	
	PBDEs	BL	---	---	
	DBP	---	BL	---	
	BBP	---	BL	---	
	DEHP	---	BL	---	
	DIBP	---	BL	---	
54	Cd	BL	---	---	PASS
	Pb	BL	---	---	
	Hg	BL	---	---	
	Cr(VI)	BL	---	---	
	PBBs	BL	---	---	
	PBDEs	BL	---	---	
	DBP	---	BL	---	
	BBP	---	BL	---	
	DEHP	---	BL	---	
	DIBP	---	BL	---	

Part No	Test Item	Results of EDXRF	Screening Result of PHTH	Result of Wet Chemical Testing (mg/kg)	Conclusion
55	Cd	BL	---	---	PASS
	Pb	BL	---	---	
	Hg	BL	---	---	
	Cr(VI)	BL	---	---	
	PBBs	BL	---	---	
	PBDEs	BL	---	---	
	DBP	---	BL	---	
	BBP	---	BL	---	
	DEHP	---	BL	---	
	DIBP	---	BL	---	
56	Cd	BL	---	---	PASS
	Pb	BL	---	---	
	Hg	BL	---	---	
	Cr(VI)	BL	---	---	
	PBBs	BL	---	---	
	PBDEs	BL	---	---	
	DBP	---	BL	---	
	BBP	---	BL	---	
	DEHP	---	BL	---	
	DIBP	---	BL	---	
57	Cd	BL	---	---	PASS
	Pb	BL	---	---	
	Hg	BL	---	---	
	Cr(VI)	BL	---	---	
	PBBs	---	---	---	
	PBDEs	---	---	---	
	DBP	---	---	---	
	BBP	---	---	---	
	DEHP	---	---	---	
	DIBP	---	---	---	

Part No	Test Item	Results of EDXRF	Screening Result of PHTH	Result of Wet Chemical Testing (mg/kg)	Conclusion
58	Cd	BL	---	---	PASS
	Pb	BL	---	---	
	Hg	BL	---	---	
	Cr(VI)	BL	---	---	
	PBBs	BL	---	---	
	PBDEs	BL	---	---	
	DBP	---	BL	---	
	BBP	---	BL	---	
	DEHP	---	BL	---	
	DIBP	---	BL	---	
59	Cd	BL	---	---	PASS
	Pb	BL	---	---	
	Hg	BL	---	---	
	Cr(VI)	BL	---	---	
	PBBs	BL	---	---	
	PBDEs	BL	---	---	
	DBP	---	BL	---	
	BBP	---	BL	---	
	DEHP	---	BL	---	
	DIBP	---	BL	---	
60	Cd	BL	---	---	PASS
	Pb	BL	---	---	
	Hg	BL	---	---	
	Cr(VI)	BL	---	---	
	PBBs	---	---	---	
	PBDEs	---	---	---	
	DBP	---	---	---	
	BBP	---	---	---	
	DEHP	---	---	---	
	DIBP	---	---	---	

Part No	Test Item	Results of EDXRF	Screening Result of PHTH	Result of Wet Chemical Testing (mg/kg)	Conclusion
61	Cd	BL	---	---	PASS
	Pb	BL	---	---	
	Hg	BL	---	---	
	Cr(VI)	BL	---	---	
	PBBs	---	---	---	
	PBDEs	---	---	---	
	DBP	---	---	---	
	BBP	---	---	---	
	DEHP	---	---	---	
	DIBP	---	---	---	
62	Cd	BL	---	---	PASS
	Pb	BL	---	---	
	Hg	BL	---	---	
	Cr(VI)	BL	---	---	
	PBBs	---	---	---	
	PBDEs	---	---	---	
	DBP	---	---	---	
	BBP	---	---	---	
	DEHP	---	---	---	
	DIBP	---	---	---	
63	Cd	BL	---	---	PASS
	Pb	BL	---	---	
	Hg	BL	---	---	
	Cr(VI)	BL	---	---	
	PBBs	BL	---	---	
	PBDEs	BL	---	---	
	DBP	---	BL	---	
	BBP	---	BL	---	
	DEHP	---	BL	---	
	DIBP	---	BL	---	

Part No	Test Item	Results of EDXRF	Screening Result of PHTH	Result of Wet Chemical Testing (mg/kg)	Conclusion
64	Cd	BL	---	---	PASS
	Pb	BL	---	---	
	Hg	BL	---	---	
	Cr(VI)	BL	---	---	
	PBBs	BL	---	---	
	PBDEs	BL	---	---	
	DBP	---	BL	---	
	BBP	---	BL	---	
	DEHP	---	BL	---	
	DIBP	---	BL	---	
65	Cd	BL	---	---	PASS
	Pb	BL	---	---	
	Hg	BL	---	---	
	Cr(VI)	BL	---	---	
	PBBs	BL	---	---	
	PBDEs	BL	---	---	
	DBP	---	BL	---	
	BBP	---	BL	---	
	DEHP	---	BL	---	
	DIBP	---	BL	---	
66	Cd	BL	---	---	PASS
	Pb	BL	---	---	
	Hg	BL	---	---	
	Cr(VI)	BL	---	---	
	PBBs	BL	---	---	
	PBDEs	BL	---	---	
	DBP	---	IN	553	
	BBP	---	BL	---	
	DEHP	---	BL	---	
	DIBP	---	BL	---	

Part No	Test Item	Results of EDXRF	Screening Result of PHTH	Result of Wet Chemical Testing (mg/kg)	Conclusion
67	Cd	BL	---	---	PASS
	Pb	BL	---	---	
	Hg	BL	---	---	
	Cr(VI)	IN	---	Negative	
	PBBs	---	---	---	
	PBDEs	---	---	---	
	DBP	---	---	---	
	BBP	---	---	---	
	DEHP	---	---	---	
	DIBP	---	---	---	
68	Cd	BL	---	---	PASS
	Pb	BL	---	---	
	Hg	BL	---	---	
	Cr(VI)	BL	---	---	
	PBBs	BL	---	---	
	PBDEs	BL	---	---	
	DBP	---	BL	---	
	BBP	---	BL	---	
	DEHP	---	BL	---	
	DIBP	---	BL	---	
69	Cd	BL	---	---	PASS
	Pb	BL	---	---	
	Hg	BL	---	---	
	Cr(VI)	BL	---	---	
	PBBs	---	---	---	
	PBDEs	---	---	---	
	DBP	---	---	---	
	BBP	---	---	---	
	DEHP	---	---	---	
	DIBP	---	---	---	

Part No	Test Item	Results of EDXRF	Screening Result of PHTH	Result of Wet Chemical Testing (mg/kg)	Conclusion
70	Cd	BL	---	---	PASS
	Pb	BL	---	---	
	Hg	BL	---	---	
	Cr(VI)	BL	---	---	
	PBBs	BL	---	---	
	PBDEs	BL	---	---	
	DBP	---	BL	---	
	BBP	---	BL	---	
	DEHP	---	BL	---	
	DIBP	---	BL	---	
71	Cd	BL	---	---	PASS
	Pb	BL	---	---	
	Hg	BL	---	---	
	Cr(VI)	IN	---	Negative	
	PBBs	---	---	---	
	PBDEs	---	---	---	
	DBP	---	---	---	
	BBP	---	---	---	
	DEHP	---	---	---	
	DIBP	---	---	---	
72	Cd	BL	---	---	PASS
	Pb	BL	---	---	
	Hg	BL	---	---	
	Cr(VI)	BL	---	---	
	PBBs	BL	---	---	
	PBDEs	BL	---	---	
	DBP	---	BL	---	
	BBP	---	BL	---	
	DEHP	---	BL	---	
	DIBP	---	BL	---	

Part No	Test Item	Results of EDXRF	Screening Result of PHTH	Result of Wet Chemical Testing (mg/kg)	Conclusion
73	Cd	BL	---	---	PASS
	Pb	BL	---	---	
	Hg	BL	---	---	
	Cr(VI)	BL	---	---	
	PBBs	BL	---	---	
	PBDEs	BL	---	---	
	DBP	---	BL	---	
	BBP	---	BL	---	
	DEHP	---	BL	---	
	DIBP	---	BL	---	
74	Cd	BL	---	---	PASS
	Pb	BL	---	---	
	Hg	BL	---	---	
	Cr(VI)	BL	---	---	
	PBBs	BL	---	---	
	PBDEs	BL	---	---	
	DBP	---	BL	---	
	BBP	---	BL	---	
	DEHP	---	BL	---	
	DIBP	---	BL	---	
75	Cd	BL	---	---	PASS
	Pb	BL	---	---	
	Hg	BL	---	---	
	Cr(VI)	BL	---	---	
	PBBs	BL	---	---	
	PBDEs	BL	---	---	
	DBP	---	BL	---	
	BBP	---	BL	---	
	DEHP	---	BL	---	
	DIBP	---	BL	---	

Part No	Test Item	Results of EDXRF	Screening Result of PHTH	Result of Wet Chemical Testing (mg/kg)	Conclusion
76	Cd	BL	---	---	PASS
	Pb	BL	---	---	
	Hg	BL	---	---	
	Cr(VI)	BL	---	---	
	PBBs	BL	---	---	
	PBDEs	BL	---	---	
	DBP	---	BL	---	
	BBP	---	BL	---	
	DEHP	---	BL	---	
	DIBP	---	BL	---	
77	Cd	BL	---	---	PASS
	Pb	BL	---	---	
	Hg	BL	---	---	
	Cr(VI)	BL	---	---	
	PBBs	IN	---	ND	
	PBDEs	IN	---	ND	
	DBP	---	BL	---	
	BBP	---	BL	---	
	DEHP	---	BL	---	
	DIBP	---	BL	---	
78	Cd	BL	---	---	PASS
	Pb	BL	---	---	
	Hg	BL	---	---	
	Cr(VI)	BL	---	---	
	PBBs	BL	---	---	
	PBDEs	BL	---	---	
	DBP	---	BL	---	
	BBP	---	BL	---	
	DEHP	---	BL	---	
	DIBP	---	BL	---	

Part No	Test Item	Results of EDXRF	Screening Result of PHTH	Result of Wet Chemical Testing (mg/kg)	Conclusion
79	Cd	BL	---	---	PASS
	Pb	BL	---	---	
	Hg	BL	---	---	
	Cr(VI)	BL	---	---	
	PBBs	---	---	---	
	PBDEs	---	---	---	
	DBP	---	---	---	
	BBP	---	---	---	
	DEHP	---	---	---	
	DIBP	---	---	---	
80	Cd	BL	---	---	PASS
	Pb	BL	---	---	
	Hg	BL	---	---	
	Cr(VI)	BL	---	---	
	PBBs	---	---	---	
	PBDEs	---	---	---	
	DBP	---	---	---	
	BBP	---	---	---	
	DEHP	---	---	---	
	DIBP	---	---	---	
81	Cd	BL	---	---	PASS
	Pb	BL	---	---	
	Hg	BL	---	---	
	Cr(VI)	BL	---	---	
	PBBs	---	---	---	
	PBDEs	---	---	---	
	DBP	---	---	---	
	BBP	---	---	---	
	DEHP	---	---	---	
	DIBP	---	---	---	

Part No	Test Item	Results of EDXRF	Screening Result of PHTH	Result of Wet Chemical Testing (mg/kg)	Conclusion
82	Cd	BL	---	---	PASS
	Pb	BL	---	---	
	Hg	BL	---	---	
	Cr(VI)	BL	---	---	
	PBBs	BL	---	---	
	PBDEs	BL	---	---	
	DBP	---	BL	---	
	BBP	---	BL	---	
	DEHP	---	BL	---	
	DIBP	---	BL	---	
83	Cd	BL	---	---	PASS
	Pb	BL	---	---	
	Hg	BL	---	---	
	Cr(VI)	BL	---	---	
	PBBs	---	---	---	
	PBDEs	---	---	---	
	DBP	---	---	---	
	BBP	---	---	---	
	DEHP	---	---	---	
	DIBP	---	---	---	
84	Cd	BL	---	---	PASS
	Pb	BL	---	---	
	Hg	BL	---	---	
	Cr(VI)	BL	---	---	
	PBBs	---	---	---	
	PBDEs	---	---	---	
	DBP	---	---	---	
	BBP	---	---	---	
	DEHP	---	---	---	
	DIBP	---	---	---	

Part No	Test Item	Results of EDXRF	Screening Result of PHTH	Result of Wet Chemical Testing (mg/kg)	Conclusion
85	Cd	BL	---	---	PASS
	Pb	BL	---	---	
	Hg	BL	---	---	
	Cr(VI)	BL	---	---	
	PBBs	BL	---	---	
	PBDEs	BL	---	---	
	DBP	---	BL	---	
	BBP	---	BL	---	
	DEHP	---	BL	---	
	DIBP	---	BL	---	
86	Cd	BL	---	---	PASS
	Pb	BL	---	---	
	Hg	BL	---	---	
	Cr(VI)	BL	---	---	
	PBBs	BL	---	---	
	PBDEs	BL	---	---	
	DBP	---	BL	---	
	BBP	---	BL	---	
	DEHP	---	BL	---	
	DIBP	---	BL	---	
87	Cd	BL	---	---	PASS
	Pb	BL	---	---	
	Hg	BL	---	---	
	Cr(VI)	BL	---	---	
	PBBs	BL	---	---	
	PBDEs	BL	---	---	
	DBP	---	BL	---	
	BBP	---	BL	---	
	DEHP	---	BL	---	
	DIBP	---	BL	---	

Part No	Test Item	Results of EDXRF	Screening Result of PHTH	Result of Wet Chemical Testing (mg/kg)	Conclusion
88	Cd	BL	---	---	PASS
	Pb	BL	---	---	
	Hg	BL	---	---	
	Cr(VI)	BL	---	---	
	PBBs	BL	---	---	
	PBDEs	BL	---	---	
	DBP	---	BL	---	
	BBP	---	BL	---	
	DEHP	---	BL	---	
	DIBP	---	BL	---	
89	Cd	BL	---	---	PASS
	Pb	BL	---	---	
	Hg	BL	---	---	
	Cr(VI)	BL	---	---	
	PBBs	BL	---	---	
	PBDEs	BL	---	---	
	DBP	---	BL	---	
	BBP	---	BL	---	
	DEHP	---	BL	---	
	DIBP	---	BL	---	
90	Cd	BL	---	---	PASS
	Pb	BL	---	---	
	Hg	BL	---	---	
	Cr(VI)	BL	---	---	
	PBBs	BL	---	---	
	PBDEs	BL	---	---	
	DBP	---	BL	---	
	BBP	---	BL	---	
	DEHP	---	BL	---	
	DIBP	---	BL	---	

Part No	Test Item	Results of EDXRF	Screening Result of PHTH	Result of Wet Chemical Testing (mg/kg)	Conclusion
91	Cd	BL	---	---	PASS
	Pb	BL	---	---	
	Hg	BL	---	---	
	Cr(VI)	BL	---	---	
	PBBs	IN	---	ND	
	PBDEs	IN	---	ND	
	DBP	---	BL	---	
	BBP	---	BL	---	
	DEHP	---	BL	---	
	DIBP	---	BL	---	
92	Cd	BL	---	---	PASS
	Pb	BL	---	---	
	Hg	BL	---	---	
	Cr(VI)	BL	---	---	
	PBBs	BL	---	---	
	PBDEs	BL	---	---	
	DBP	---	BL	---	
	BBP	---	BL	---	
	DEHP	---	BL	---	
	DIBP	---	BL	---	
93	Cd	BL	---	---	PASS
	Pb	BL	---	---	
	Hg	BL	---	---	
	Cr(VI)	BL	---	---	
	PBBs	BL	---	---	
	PBDEs	BL	---	---	
	DBP	---	BL	---	
	BBP	---	BL	---	
	DEHP	---	BL	---	
	DIBP	---	BL	---	

Part No	Test Item	Results of EDXRF	Screening Result of PHTH	Result of Wet Chemical Testing (mg/kg)	Conclusion
94	Cd	BL	---	---	PASS
	Pb	BL	---	---	
	Hg	BL	---	---	
	Cr(VI)	BL	---	---	
	PBBs	BL	---	---	
	PBDEs	BL	---	---	
	DBP	---	BL	---	
	BBP	---	BL	---	
	DEHP	---	BL	---	
	DIBP	---	BL	---	
95	Cd	BL	---	---	PASS
	Pb	BL	---	---	
	Hg	BL	---	---	
	Cr(VI)	BL	---	---	
	PBBs	BL	---	---	
	PBDEs	BL	---	---	
	DBP	---	BL	---	
	BBP	---	BL	---	
	DEHP	---	BL	---	
	DIBP	---	BL	---	
96	Cd	BL	---	---	PASS
	Pb	BL	---	---	
	Hg	BL	---	---	
	Cr(VI)	BL	---	---	
	PBBs	IN	---	ND	
	PBDEs	IN	---	ND	
	DBP	---	BL	---	
	BBP	---	BL	---	
	DEHP	---	BL	---	
	DIBP	---	BL	---	

Part No	Test Item	Results of EDXRF	Screening Result of PHTH	Result of Wet Chemical Testing (mg/kg)	Conclusion
97	Cd	BL	---	---	PASS
	Pb	BL	---	---	
	Hg	BL	---	---	
	Cr(VI)	BL	---	---	
	PBBs	BL	---	---	
	PBDEs	BL	---	---	
	DBP	---	BL	---	
	BBP	---	BL	---	
	DEHP	---	BL	---	
	DIBP	---	BL	---	
98	Cd	BL	---	---	PASS
	Pb	BL	---	---	
	Hg	BL	---	---	
	Cr(VI)	BL	---	---	
	PBBs	BL	---	---	
	PBDEs	BL	---	---	
	DBP	---	BL	---	
	BBP	---	BL	---	
	DEHP	---	BL	---	
	DIBP	---	BL	---	
99	Cd	BL	---	---	PASS
	Pb	BL	---	---	
	Hg	BL	---	---	
	Cr(VI)	BL	---	---	
	PBBs	BL	---	---	
	PBDEs	BL	---	---	
	DBP	---	BL	---	
	BBP	---	BL	---	
	DEHP	---	BL	---	
	DIBP	---	BL	---	

Part No	Test Item	Results of EDXRF	Screening Result of PHTH	Result of Wet Chemical Testing (mg/kg)	Conclusion
100	Cd	BL	---	---	PASS
	Pb	BL	---	---	
	Hg	BL	---	---	
	Cr(VI)	BL	---	---	
	PBBs	IN	---	ND	
	PBDEs	IN	---	ND	
	DBP	---	BL	---	
	BBP	---	BL	---	
	DEHP	---	BL	---	
	DIBP	---	BL	---	
101	Cd	BL	---	---	PASS
	Pb	BL	---	---	
	Hg	BL	---	---	
	Cr(VI)	BL	---	---	
	PBBs	BL	---	---	
	PBDEs	BL	---	---	
	DBP	---	BL	---	
	BBP	---	BL	---	
	DEHP	---	BL	---	
	DIBP	---	BL	---	
102	Cd	BL	---	---	PASS
	Pb	BL	---	---	
	Hg	BL	---	---	
	Cr(VI)	BL	---	---	
	PBBs	---	---	---	
	PBDEs	---	---	---	
	DBP	---	---	---	
	BBP	---	---	---	
	DEHP	---	---	---	
	DIBP	---	---	---	

Part No	Test Item	Results of EDXRF	Screening Result of PHTH	Result of Wet Chemical Testing (mg/kg)	Conclusion
103	Cd	BL	---	---	PASS
	Pb	OL	---	27119##	
	Hg	BL	---	---	
	Cr(VI)	BL	---	---	
	PBBs	---	---	---	
	PBDEs	---	---	---	
	DBP	---	---	---	
	BBP	---	---	---	
	DEHP	---	---	---	
	DIBP	---	---	---	
104	Cd	BL	---	---	PASS
	Pb	BL	---	---	
	Hg	BL	---	---	
	Cr(VI)	BL	---	---	
	PBBs	---	---	---	
	PBDEs	---	---	---	
	DBP	---	---	---	
	BBP	---	---	---	
	DEHP	---	---	---	
	DIBP	---	---	---	
105	Cd	BL	---	---	PASS
	Pb	BL	---	---	
	Hg	BL	---	---	
	Cr(VI)	BL	---	---	
	PBBs	---	---	---	
	PBDEs	---	---	---	
	DBP	---	---	---	
	BBP	---	---	---	
	DEHP	---	---	---	
	DIBP	---	---	---	

Part No	Test Item	Results of EDXRF	Screening Result of PHTH	Result of Wet Chemical Testing (mg/kg)	Conclusion
106	Cd	BL	---	---	PASS
	Pb	BL	---	---	
	Hg	BL	---	---	
	Cr(VI)	BL	---	---	
	PBBs	BL	---	--	
	PBDEs	BL	---	--	
	DBP	---	BL	---	
	BBP	---	BL	---	
	DEHP	---	BL	---	
	DIBP	---	BL	---	
107	Cd	OL	---	26	PASS
	Pb	OL	---	34141##	
	Hg	BL	---	---	
	Cr(VI)	BL	---	---	
	PBBs	---	---	---	
	PBDEs	---	---	---	
	DBP	---	---	---	
	BBP	---	---	---	
	DEHP	---	---	---	
	DIBP	---	---	---	
108	Cd	BL	---	---	PASS
	Pb	BL	---	---	
	Hg	BL	---	---	
	Cr(VI)	BL	---	---	
	PBBs	BL	---	---	
	PBDEs	BL	---	---	
	DBP	---	BL	---	
	BBP	---	BL	---	
	DEHP	---	BL	---	
	DIBP	---	BL	---	

Part No	Test Item	Results of EDXRF	Screening Result of PHTH	Result of Wet Chemical Testing (mg/kg)	Conclusion
109	Cd	BL	---	---	PASS
	Pb	BL	---	---	
	Hg	BL	---	---	
	Cr(VI)	BL	---	---	
	PBBs	BL	---	---	
	PBDEs	BL	---	---	
	DBP	---	BL	---	
	BBP	---	BL	---	
	DEHP	---	BL	---	
	DIBP	---	BL	---	
110	Cd	BL	---	---	PASS
	Pb	BL	---	---	
	Hg	BL	---	---	
	Cr(VI)	BL	---	---	
	PBBs	---	---	---	
	PBDEs	---	---	---	
	DBP	---	---	---	
	BBP	---	---	---	
	DEHP	---	---	---	
	DIBP	---	---	---	
111	Cd	BL	---	---	PASS
	Pb	OL	---	31754 ^{##}	
	Hg	BL	---	---	
	Cr(VI)	BL	---	---	
	PBBs	---	---	---	
	PBDEs	---	---	---	
	DBP	---	---	---	
	BBP	---	---	---	
	DEHP	---	---	---	
	DIBP	---	---	---	

Part No	Test Item	Results of EDXRF	Screening Result of PHTH	Result of Wet Chemical Testing (mg/kg)	Conclusion
112	Cd	BL	---	---	PASS
	Pb	BL	---	---	
	Hg	BL	---	---	
	Cr(VI)	BL	---	---	
	PBBs	---	---	---	
	PBDEs	---	---	---	
	DBP	---	---	---	
	BBP	---	---	---	
	DEHP	---	---	---	
	DIBP	---	---	---	
113	Cd	BL	---	---	PASS
	Pb	BL	---	---	
	Hg	BL	---	---	
	Cr(VI)	BL	---	---	
	PBBs	---	---	---	
	PBDEs	---	---	---	
	DBP	---	---	---	
	BBP	---	---	---	
	DEHP	---	---	---	
	DIBP	---	---	---	
114	Cd	BL	---	---	PASS
	Pb	BL	---	---	
	Hg	BL	---	---	
	Cr(VI)	BL	---	---	
	PBBs	BL	---	---	
	PBDEs	BL	---	---	
	DBP	---	BL	---	
	BBP	---	BL	---	
	DEHP	---	BL	---	
	DIBP	---	BL	---	

Part No	Test Item	Results of EDXRF	Screening Result of PHTH	Result of Wet Chemical Testing (mg/kg)	Conclusion
115	Cd	BL	---	---	PASS
	Pb	BL	---	---	
	Hg	BL	---	---	
	Cr(VI)	BL	---	---	
	PBBs	BL	---	---	
	PBDEs	BL	---	---	
	DBP	---	BL	---	
	BBP	---	BL	---	
	DEHP	---	BL	---	
	DIBP	---	BL	---	
116	Cd	BL	---	---	PASS
	Pb	BL	---	---	
	Hg	BL	---	---	
	Cr(VI)	BL	---	---	
	PBBs	BL	---	---	
	PBDEs	BL	---	---	
	DBP	---	BL	---	
	BBP	---	BL	---	
	DEHP	---	BL	---	
	DIBP	---	BL	---	
117	Cd	BL	---	---	PASS
	Pb	BL	---	---	
	Hg	BL	---	---	
	Cr(VI)	BL	---	---	
	PBBs	---	---	---	
	PBDEs	---	---	---	
	DBP	---	---	---	
	BBP	---	---	---	
	DEHP	---	---	---	
	DIBP	---	---	---	

Part No	Test Item	Results of EDXRF	Screening Result of PHTH	Result of Wet Chemical Testing (mg/kg)	Conclusion
118	Cd	BL	---	---	PASS
	Pb	BL	---	---	
	Hg	BL	---	---	
	Cr(VI)	BL	---	---	
	PBBs	BL	---	---	
	PBDEs	BL	---	---	
	DBP	---	BL	---	
	BBP	---	BL	---	
	DEHP	---	BL	---	
	DIBP	---	BL	---	
119	Cd	BL	---	---	PASS
	Pb	BL	---	---	
	Hg	BL	---	---	
	Cr(VI)	BL	---	---	
	PBBs	BL	---	---	
	PBDEs	BL	---	---	
	DBP	---	BL	---	
	BBP	---	BL	---	
	DEHP	---	BL	---	
	DIBP	---	BL	---	
120	Cd	BL	---	---	PASS
	Pb	BL	---	---	
	Hg	BL	---	---	
	Cr(VI)	BL	---	---	
	PBBs	---	---	---	
	PBDEs	---	---	---	
	DBP	---	---	---	
	BBP	---	---	---	
	DEHP	---	---	---	
	DIBP	---	---	---	

Part No	Test Item	Results of EDXRF	Screening Result of PHTH	Result of Wet Chemical Testing (mg/kg)	Conclusion
121	Cd	BL	---	---	PASS
	Pb	BL	---	---	
	Hg	BL	---	---	
	Cr(VI)	BL	---	---	
	PBBs	---	---	---	
	PBDEs	---	---	---	
	DBP	---	---	---	
	BBP	---	---	---	
	DEHP	---	---	---	
	DIBP	---	---	---	
122	Cd	BL	---	---	PASS
	Pb	BL	---	---	
	Hg	BL	---	---	
	Cr(VI)	BL	---	---	
	PBBs	BL	---	---	
	PBDEs	BL	---	---	
	DBP	---	BL	---	
	BBP	---	BL	---	
	DEHP	---	BL	---	
	DIBP	---	BL	---	

Note:

BL = Below Limit

OL= Limit exceeded

--- = No Testing Required

mg/kg = milligram per kilogram

IN = Inconclusive

ND = Not Detected (lower than MDL)

Negative = Result indicates the absence of hexavalent chromium in the tested sample.

= According to the product specification provided from client, specimen No.103、107、111 of the submitted sample are copper alloy containing up to 40000 mg/kg Lead by weight which is exempted by RoHS regulatory (Directive 2015/863/EU amending Annex II to Directive 2011/65/EU of The European Parliament and of The Council of 31 March 2015).

Remark:

1. (a) There are the results on total Br while test items on restricted substances are PBBs and PBDEs.
There is the result on total Cr while test item on restricted substances is Cr(VI).
- (b) Results are obtained by EDXRF for primary screening, and further chemical testing by ICP-OES (for Cd, Pb, Hg), UV-Vis (for Cr(VI)) and GC-MS (for PBBs, PBDEs) is recommended to be performed if the concentration exceeds the below warning value according to IEC62321-3-1:2013 (unit: mg/kg).

Element	Unit	Polymer	Metal	Composite Material
Cd	mg/kg	$BL \leq (70-3\sigma) < IN < (130+3\sigma) \leq OL$	$BL \leq (70-3\sigma) < IN < (130+3\sigma) \leq OL$	$LOD < IN < (150+3\sigma) \leq OL$
Pb	mg/kg	$BL \leq (700-3\sigma) < IN < (1300+3\sigma) \leq OL$	$BL \leq (700-3\sigma) < IN < (1300+3\sigma) \leq OL$	$BL \leq (500-3\sigma) < IN < (1500+3\sigma) \leq OL$
Hg	mg/kg	$BL \leq (700-3\sigma) < IN < (1300+3\sigma) \leq OL$	$BL \leq (700-3\sigma) < IN < (1300+3\sigma) \leq OL$	$BL \leq (500-3\sigma) < IN < (1500+3\sigma) \leq OL$
Br	mg/kg	$BL \leq (300-3\sigma) < IN$	--	$BL \leq (250-3\sigma) < IN$
Cr	mg/kg	$BL \leq (700-3\sigma) < IN$	$BL \leq (700-3\sigma) < IN$	$BL \leq (500-3\sigma) < IN$

BL = Below Limit

OL = Over Limit

IN = Inconclusive

LOD = Limit of Detection

mg/kg=ppm= milligram per kilogram

- (c) Screening results of PHTH are for hybrid test by GC-MS, and further chemical testing by GC-MS (for DBP, BBP, DEHP and DIBP) are recommended to be performed if the concentration exceeds the below warning value (unit: mg/kg).

Compound	Polymer
DBP	$BL \leq 600 < IN$
BBP	$BL \leq 600 < IN$
DEHP	$BL \leq 600 < IN$
DIBP	$BL \leq 600 < IN$

mg/kg = milligram per kilogram

1% = 10000 mg/kg = 10000 ppm

2. Test Method

Tested Item(s)	Test Method	Measured Equipment(s)
Lead (Pb)	IEC62321-5:2013	ICP-OES
Cadmium (Cd)	IEC62321-5:2013	ICP-OES
Mercury (Hg)	IEC 62321-4:2013+AMD1:2017	ICP-OES
Hexavalent chromium (Cr(VI)) for plastic	IEC62321-7-2:2017 and/or determination of Total Chromium by IEC 62321-5:2013	UV-Vis/ICP-OES
Hexavalent chromium (Cr(VI)) for coating on metals	IEC62321-7-1:2015 and/or determination of Total Chromium by IEC 62321-5:2013	UV-Vis/ICP-OES
Polybrominated Biphenyls (PBBs)	IEC62321-6:2015	GC-MS
Polybrominated Diphenyl Ethers (PBDEs)	IEC62321-6:2015	GC-MS
Phthalates (DBP, BBP, DEHP, DIBP)	IEC62321-8:2017	GC-MS

3. RoHS Requirement

Unit:mg/kg

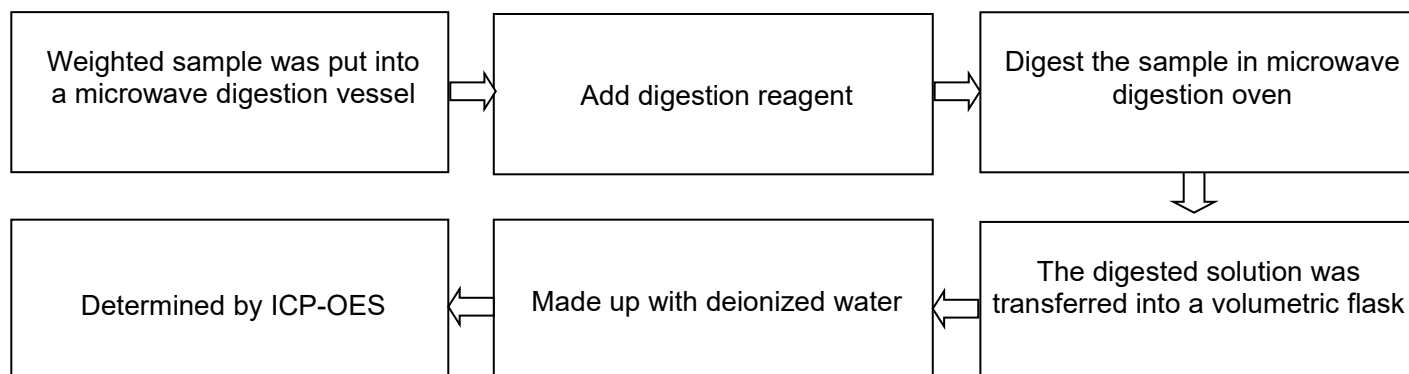
Restricted substances	Cd	Pb	Hg	Cr(VI)	PBBs	PBDEs	BBP	DBP	DEHP	DIBP
MDL	10	10	10	--	100	100	100	100	100	100
RoHS limit	100	1000	1000	1000	1000	1000	1000	1000	1000	1000

MDL of Cr(VI) for polymer, composite and leather sample is 10 mg/kg.

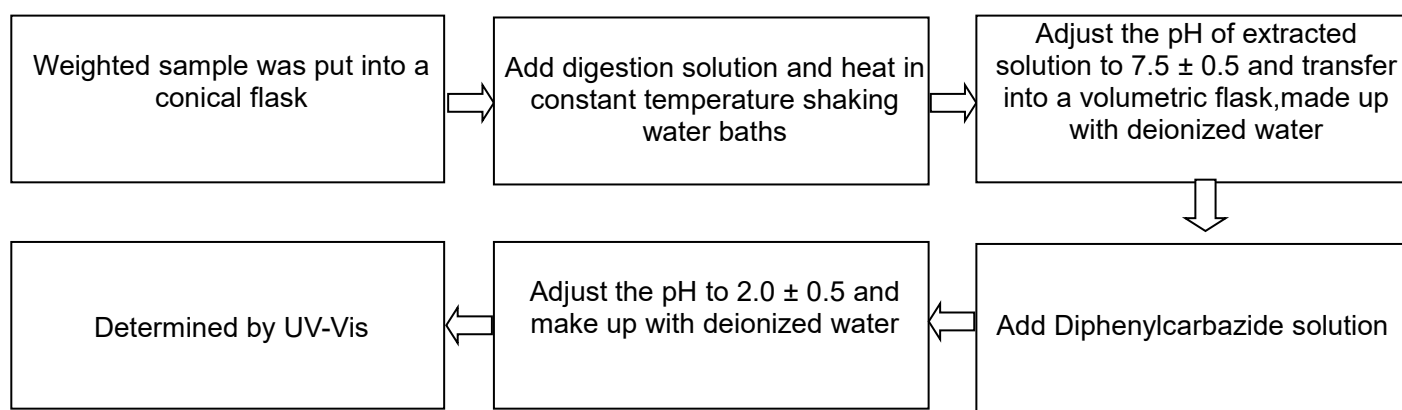
 MDL of Cr(VI) for metal sample is 0.10µg/cm²

4. Measurement Flowchart

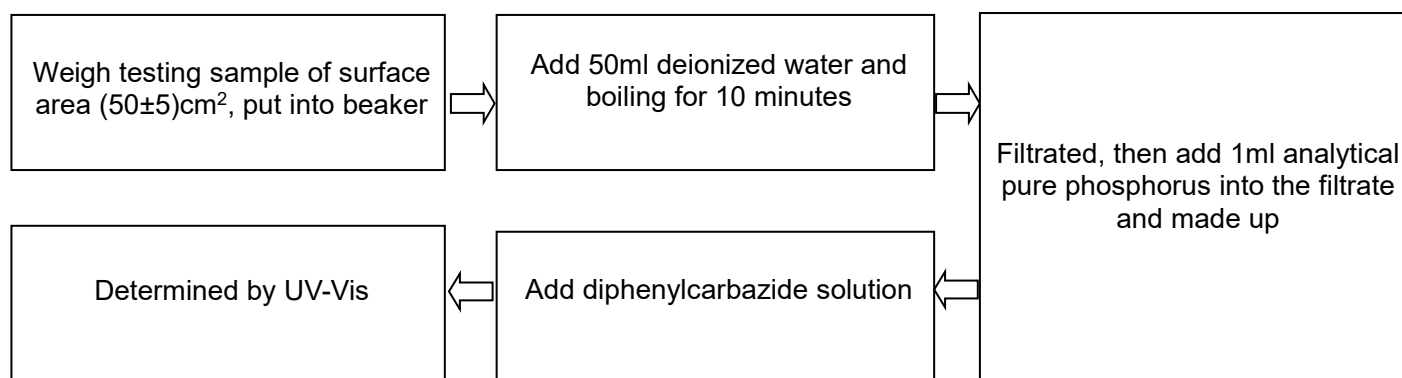
a. Test for Cd / Pb /Hg contents)



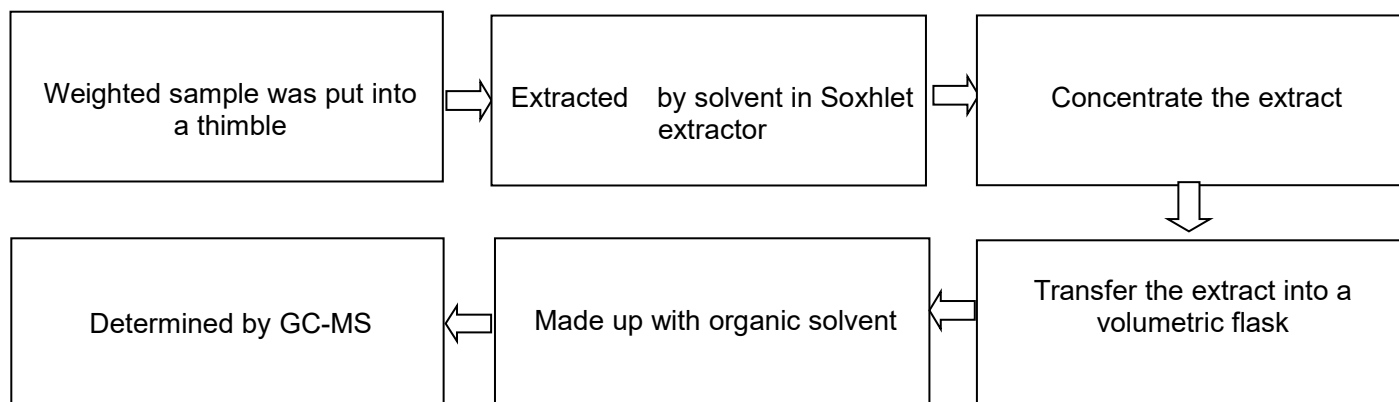
b. Test for Cr(VI) content (for non-metal)



c. Test for Cr(VI) content (for metal)

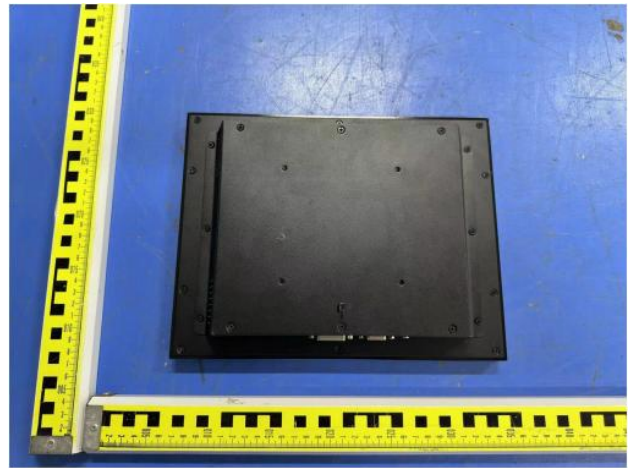
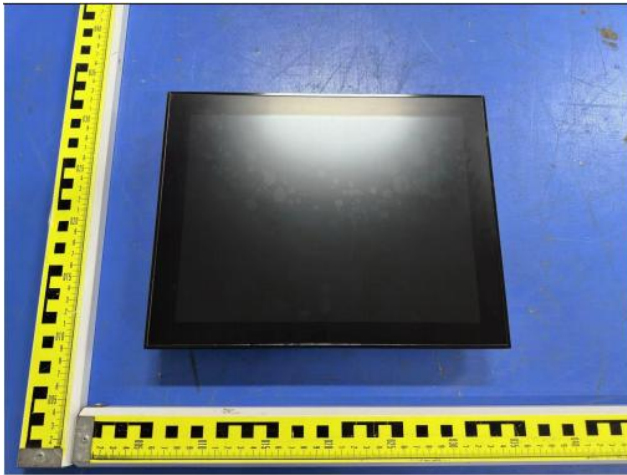


d. Test for PBBs,PBDEs,DBP,BBP,DEHP,DIBP

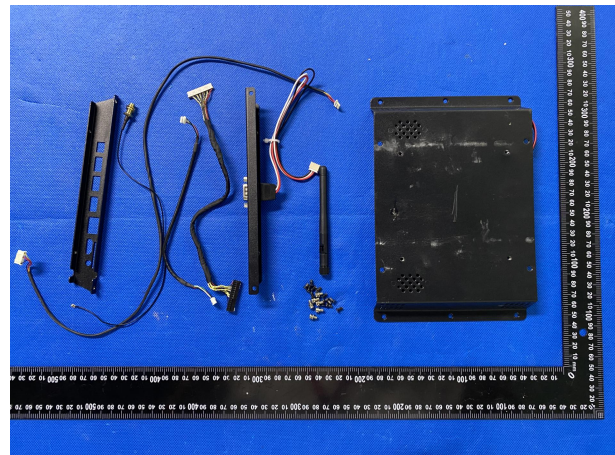
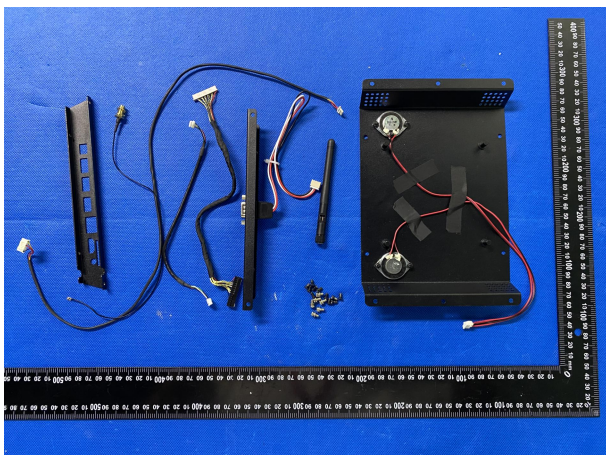
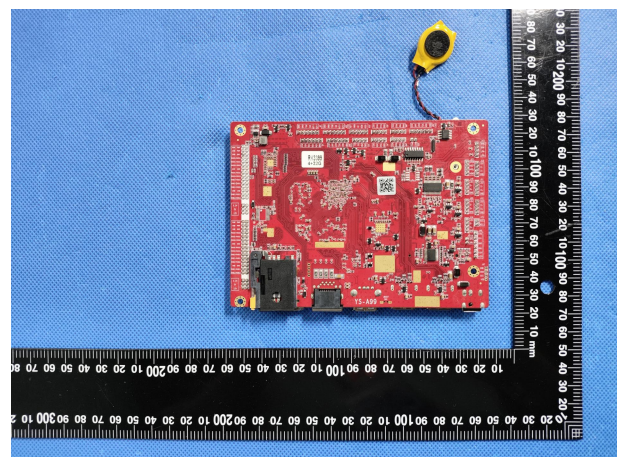
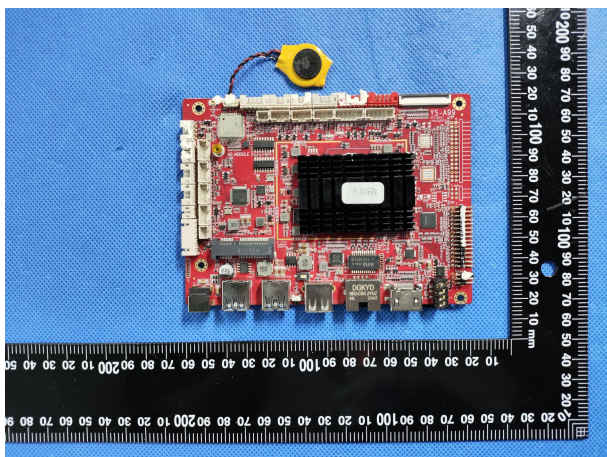


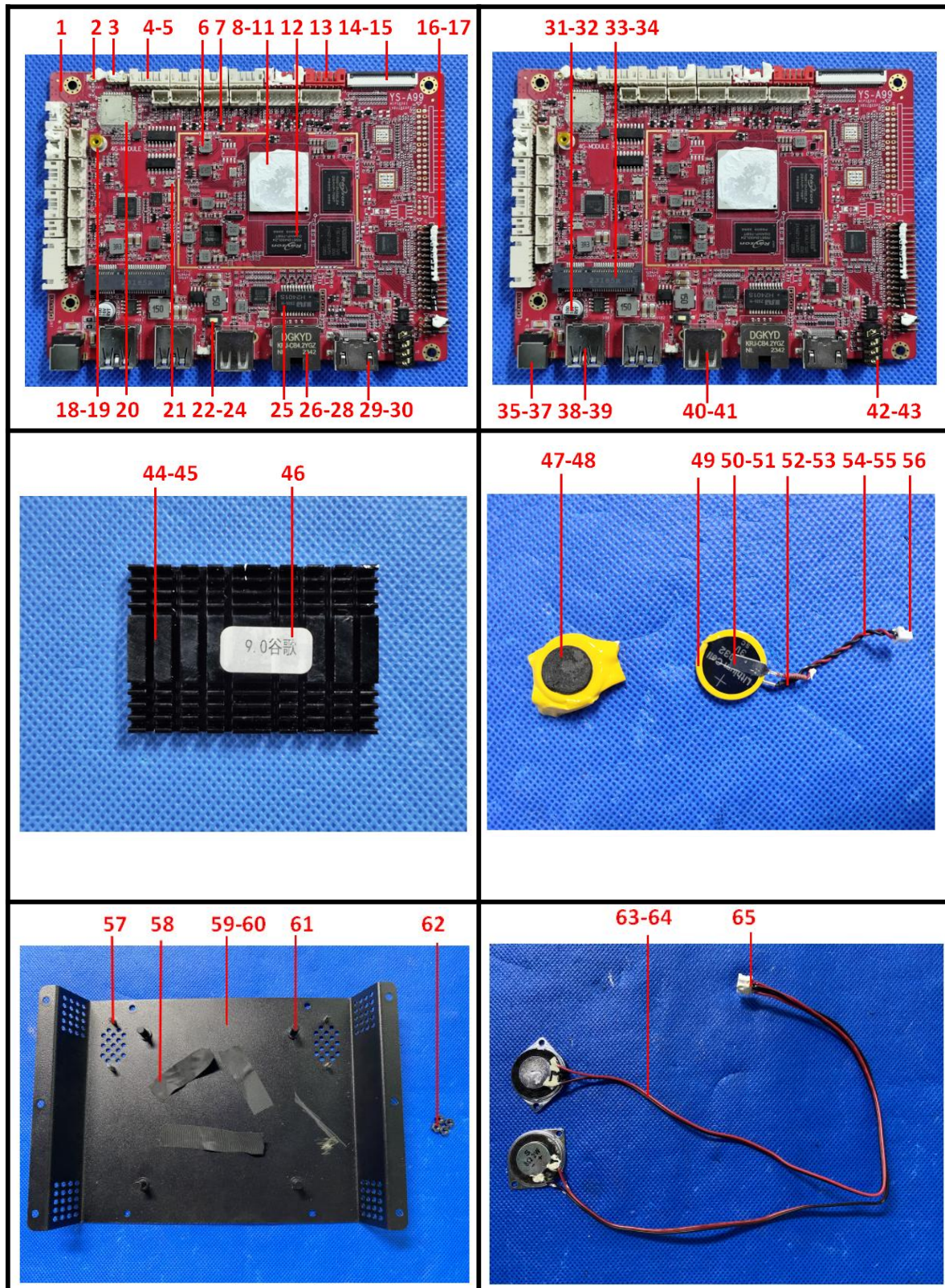
5. Photo(s) of the sample(s)

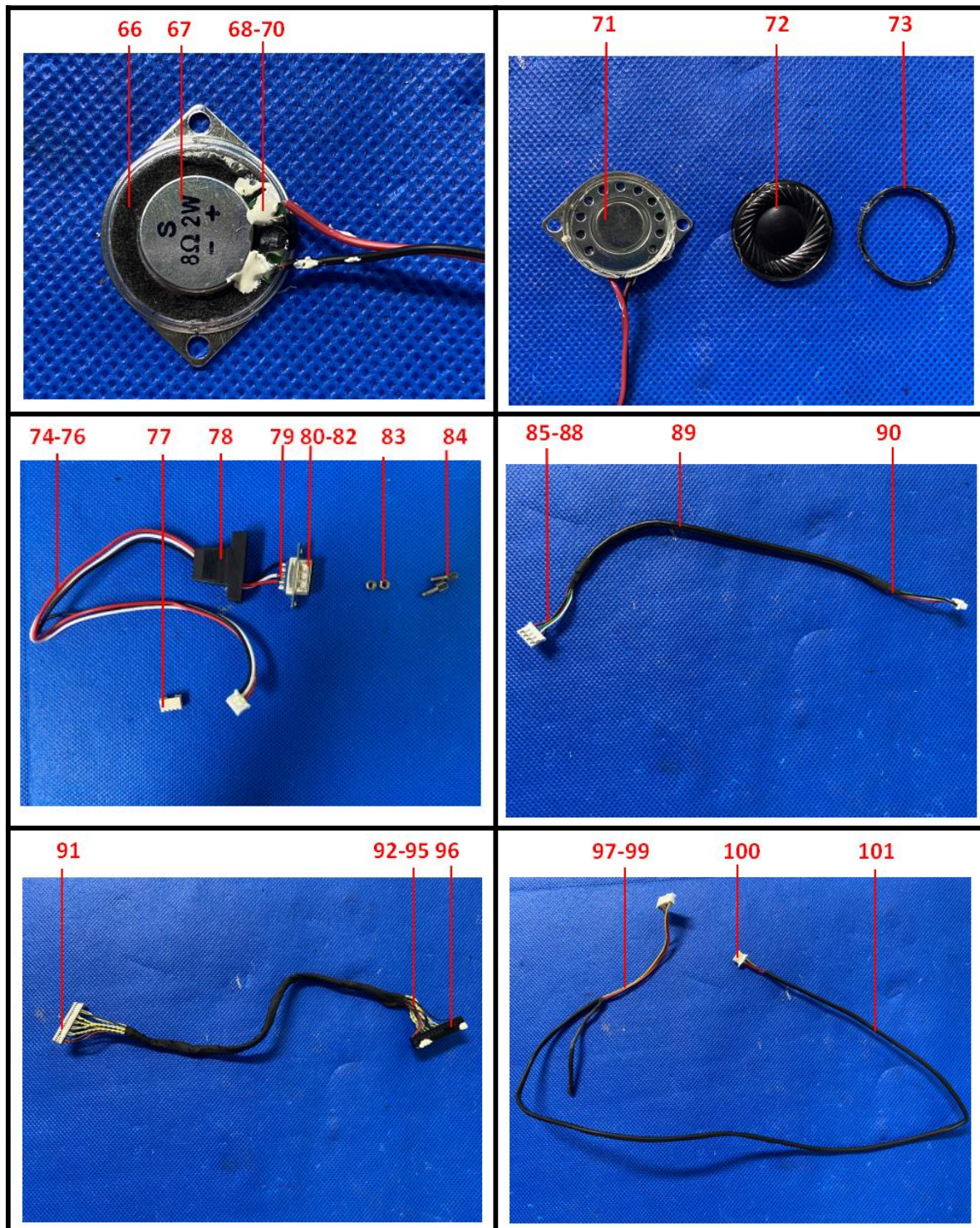
Below are provided photos by the client and do not test:

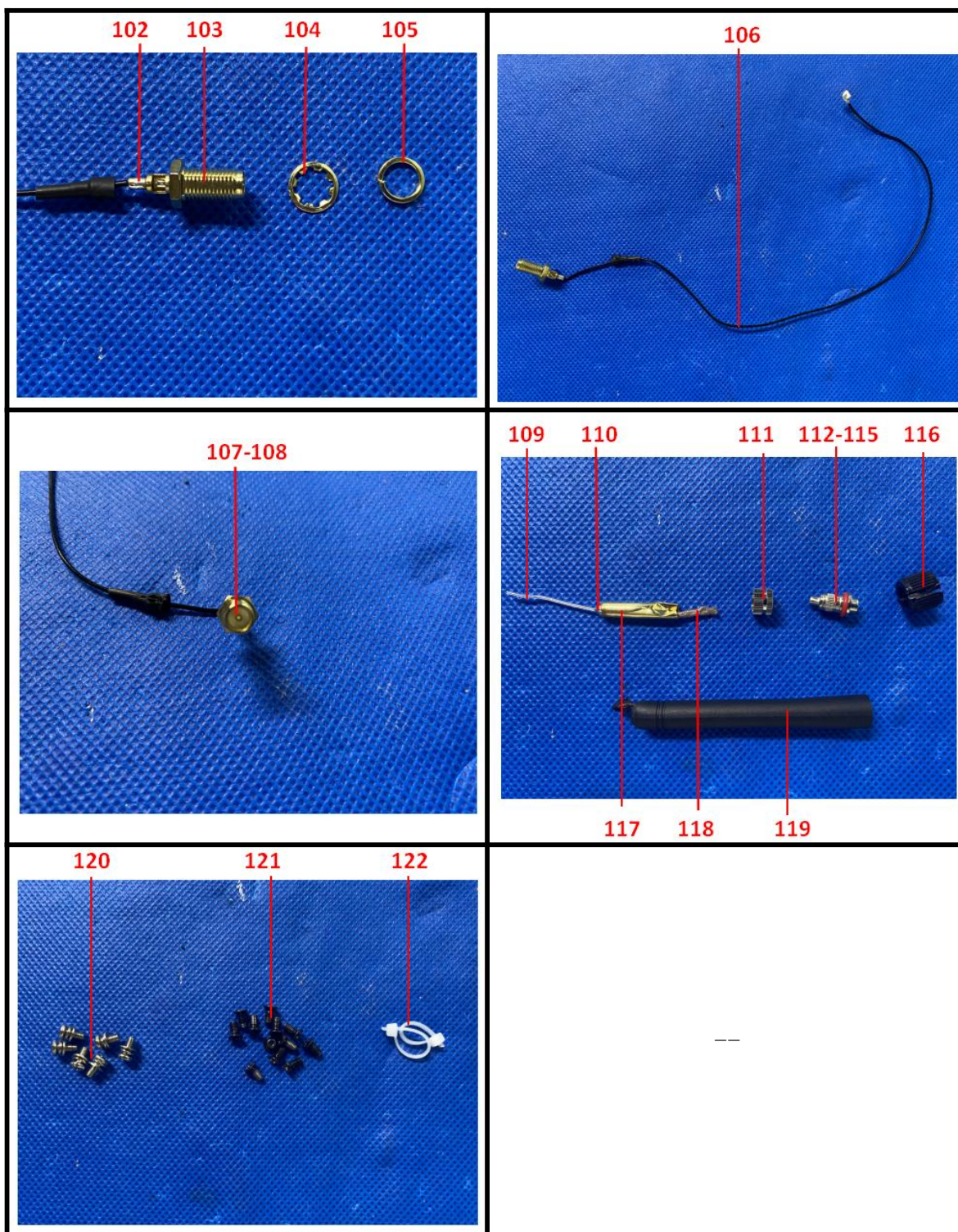


Sample Photo:









The results of this report apply only to samples received, Without written authorization, any copy of this report for propaganda is invalid.

.....End of Report.....